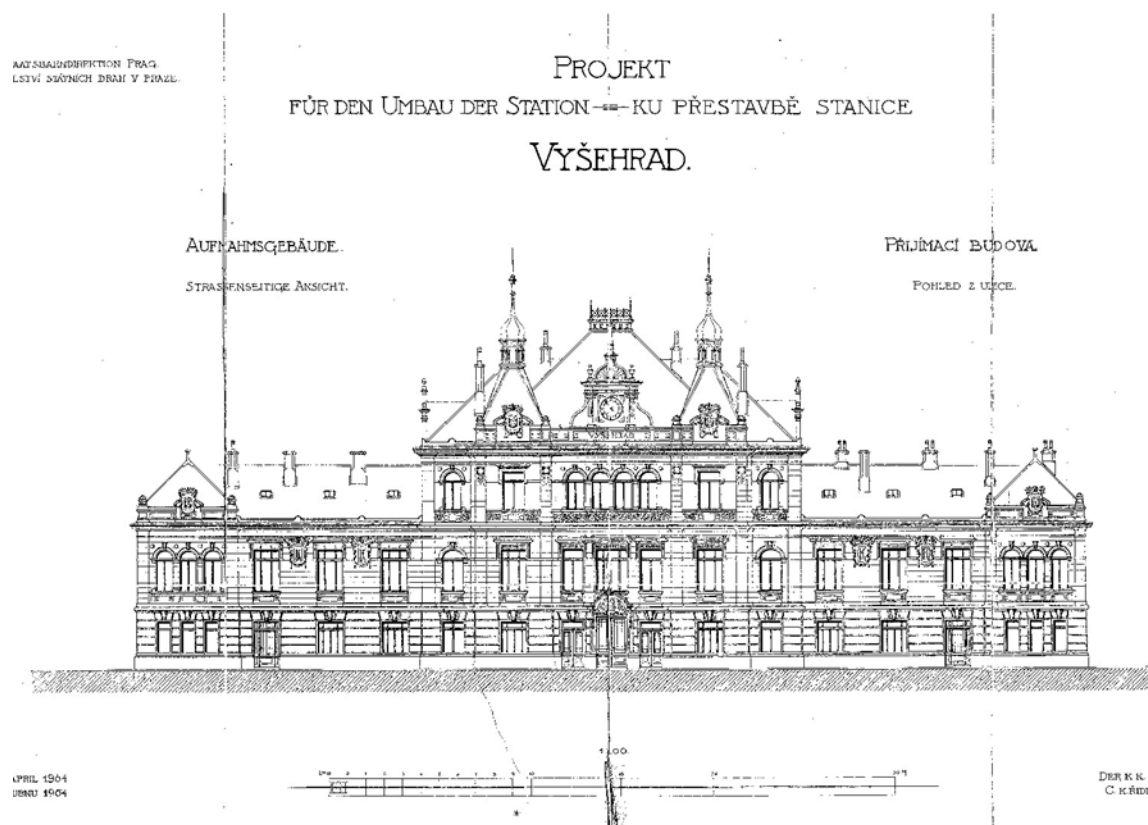


Station Vyšehrad



- It was built in 1872
- The autor is not known
- It was in operation from 1872 – 1960
- It is art Nouveau two-storey building

- Design from 1904



- The cost of the building is estimated at 41 million czech crowns (1 595 641 EUR)
- In 2007 it was sell to TIP Estate for 42,5 milion czech crowns but on this place still nothing happen
- In 2009 building durned down (maybe squatters are responsible for this)



